

Making Life

CREATIVE

Mixing It Up

Keeping your art program visually interesting

Artwork always brightens up a space but let's face it, framed poster after framed poster in every hallway on every floor can get...a little..boring. If our task is to use artwork as a tool to de-stress and heal our patients then it becomes vital to provide them with enough variety to ensure they are actually looking at the artwork. So let's mix it up a bit...

Installing in clusters or series



Hanging themes in surprising configurations takes landscape photography to another level.

Different shapes and sizes in same visual plane



Cost effective framed open edition prints can be livened up by installing differing orientations and scales in a smaller space.

Unexpected Substrates



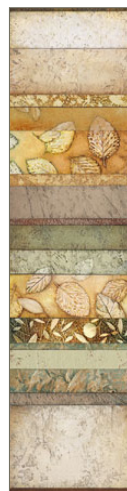
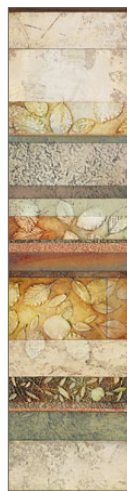
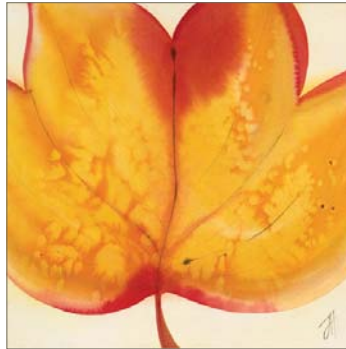
We don't always have to use paper and canvas. Aluminum, acrylic and sustainable bamboo are currently available as mediums for most of our image library.

Landmark Features

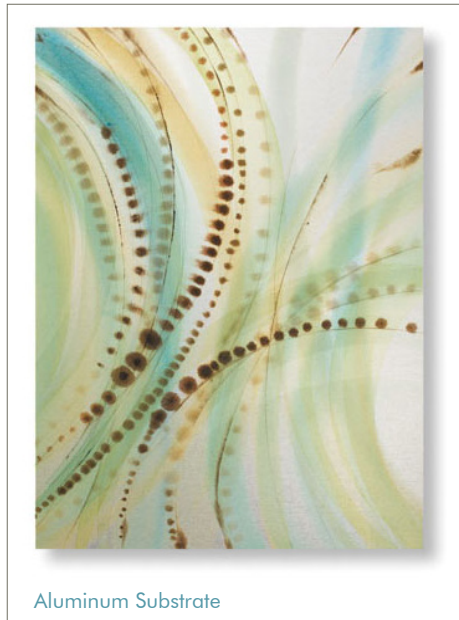


Especially at decision points, key landmark areas and entrances a well placed high impact feature will resonate with a viewer more than several traditionally hung pieces.

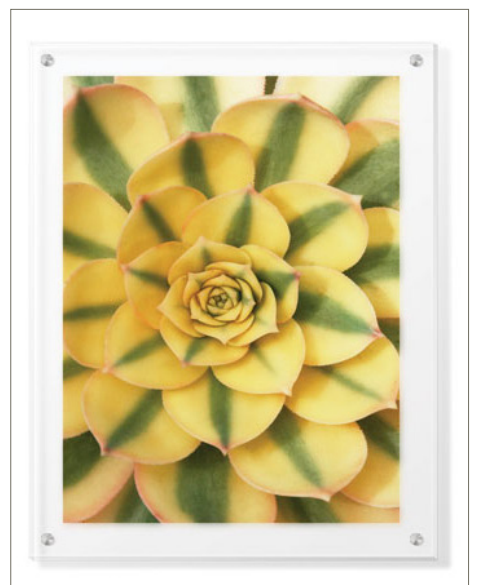




Bamboo Substrate



Aluminum Substrate



To speak with a consultant for information on how to keep your art program interesting, please call 1.800.220.7446 or email us at consultant@creativeartprograms.com



CREATIVE
Signage Systems | Art Programs

9101 51st Place College Park, MD 20740
T: 800.220.7446 P:301.345.3700 F:301.220.0289
Creative Art Programs | GS-03F-5098C | 800.220.7446
www.creativeartprograms.com

